

LOOK WHAT'S HAPPENING THIS FALL!!!

AFTER SCHOOL ENRICHMENT PROGRAM

Sponsored by the



Here's what you need to know:

- ❖ **CLASS CHOICES AND REGISTRATION:** All pertinent information and registration for the fall session will be available when school resumes. Online registration at psmanhattan.org will be the preferred method for the enrichment program.
- ❖ **SCHEDULE:** Afternoon classes for grades K-5 will be held Monday through Thursday after regular dismissal. Wednesday classes will begin at early dismissal with the usual on site supervision. Classes will begin either the last week of September or the first week of October - to be determined.
- ❖ **CLASSES:** A variety of options will be available, including enrichment and outdoor activities. You may view the schedule for last spring to familiarize yourself with the general format and program options. The fall schedule will be posted online at psmanhattan.org when school resumes and enrollment is open.
- ❖ **MORNING KINDERGARTEN CLASSES:** These classes are offered on select days at 10:15 and 11:25, before and after A.M. and P.M. Kindergarten. Additional information will be available for Kindergarten families once enrollment is underway.
- ❖ **QUESTIONS:** Any questions in advance of registration may be directed to Nancy Rosenberg, Program Director, at 376-6115 or email nsrosenb@aol.com

Please consider including one or more of these exciting enrichment opportunities in your child's fall schedule. And many more!!!



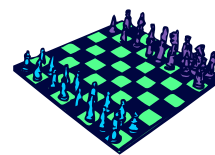
Computer



LEGO



Art and Cartoony



Chess